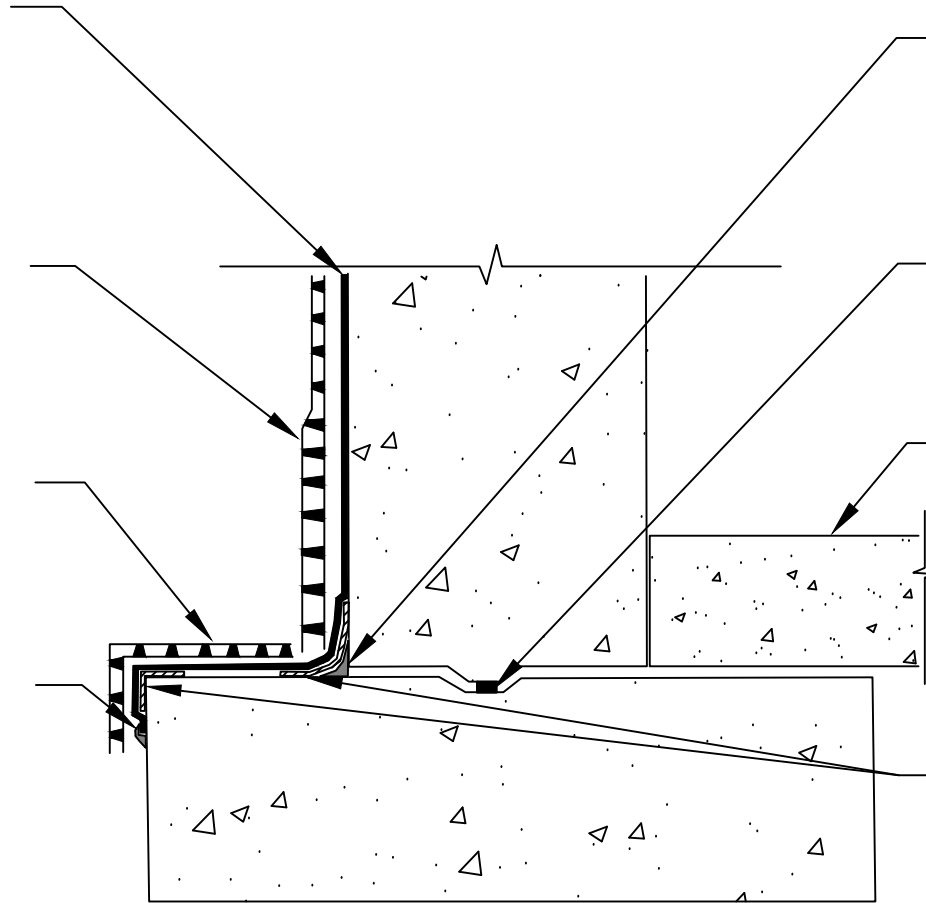


PRIMETAK MEMBRANE APPLIED TO SUBSTRATE PREPARED WITH PRIMETAK LIQUID ADHESIVE, CALIFORNIA SEALANT OR ST LIQUID ADHESIVE AT A RATE OF 250 - 300 SQ. FT. PER GALLON

K-DRAIN COMPOSITE DRAINBOARD - FABRIC FACING BACKFILL

K-DRAIN COMPOSITE DRAINBOARD - FABRIC FACING BACKFILL - PRIMARILY FOR PROTECTION OF THE MEMBRANE

PRIMETAK DETAIL SEALANT OR LIQUID MEMBRANE APPLIED TO TERMINAL EDGE OF MEMBRANE



3/4" FILLET OF PRIMETAK DETAIL SEALANT OR LIQUID MEMBRANE APPLIED TO INSIDE CORNERS VERTICALLY AND HORIZONTALLY TO RAW CONCRETE - ALLOW PRIMETAK DETAIL SEALANT TO CURE FOR 2 HOURS PRIOR TO SHEET APPLICATION

BENTOTAK DS WATERSTOP  
TOP OF INTERIOR FLOOR HEIGHT 12" AND UNDER FROM TOP OF FOOTER - WATERPROOF AS SHOWN - IF FOOTER IS POURED IN PLACE FOOTER MEMBRANE MUST BE CARRIED OUT 12" AND TERMINATED WITH TERMINATION BAR AND SEALED WITH PRIMETAK DETAIL SEALANT OR LIQUID MEMBRANE

12" STRIP OF DETAIL MEMBRANE/ TAPE APPLIED TO INSIDE AND OUTSIDE CORNERS - PREPARE SUBSTRATE WITH PRIMETAK LIQUID ADHESIVE, CALIFORNIA SEALANT OR ST LIQUID ADHESIVE AT A RATE OF 250 - 300 SQ. FT. PER GALLON

**KINGFIELD**  
CONSTRUCTION PRODUCTS

20 N 4th St, Suite 300  
Minneapolis, MN 55401  
e: info@kingfieldcp.com  
o/f: 612.225.5167

SECTION @ FOOTER WATERPROOFING - TOP OF INTERIOR FLOOR IS 12" AND UNDER FROM TOP OF FOOTER

**SPECIAL NOTE: IF ADHESIVE IS REQUIRED FOR SEAMS OR ENDLAPS DO NOT USE ST LIQUID ADHESIVE**

DRAWING NO.: PRI.09

SCALE: NOT TO SCALE

EFFECTIVE DATE: .