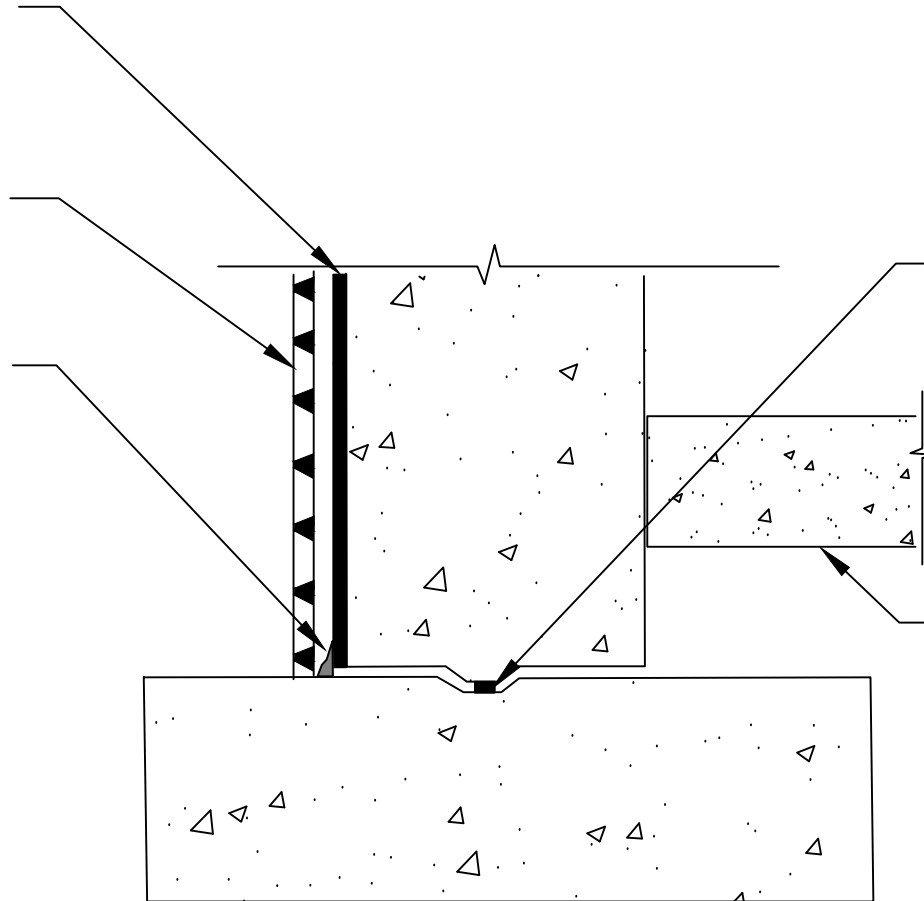


PRIMETAK MEMBRANE APPLIED TO SUBSTRATE PREPARED WITH PRIMETAK LIQUID ADHESIVE, CALIFORNIA SEALANT OR ST LIQUID ADHESIVE AT A RATE OF 250 - 300 SQ. FT. PER GALLON

K-DRAIN COMPOSITE DRAINBOARD - FABRIC FACING BACKFILL

PRIMETAK DETAIL SEALANT OR LIQUID MEMBRANE APPLIED TO TERMINAL EDGE OF MEMBRANE



BENTOTAK DS WATERSTOP

TOP OF INTERIOR FLOOR HEIGHT IS GREATER THAN 12" ABOVE TOP OF FOOTER

KINGFIELD
CONSTRUCTION PRODUCTS

20 N 4th St, Suite 300
Minneapolis, MN 55401
e: info@kingfieldcp.com
o/f: 612.225.5167

SECTION @ FOOTER WATERPROOFING - TOP OF INTERIOR FLOOR IS GREATER THAN 12" ABOVE TOP OF FOOTER

SPECIAL NOTE: IF ADHESIVE IS REQUIRED FOR SEAMS OR ENDLAPS DO NOT USE ST LIQUID ADHESIVE

DRAWING NO. : PRI.10

SCALE : NOT TO SCALE

EFFECTIVE DATE : .