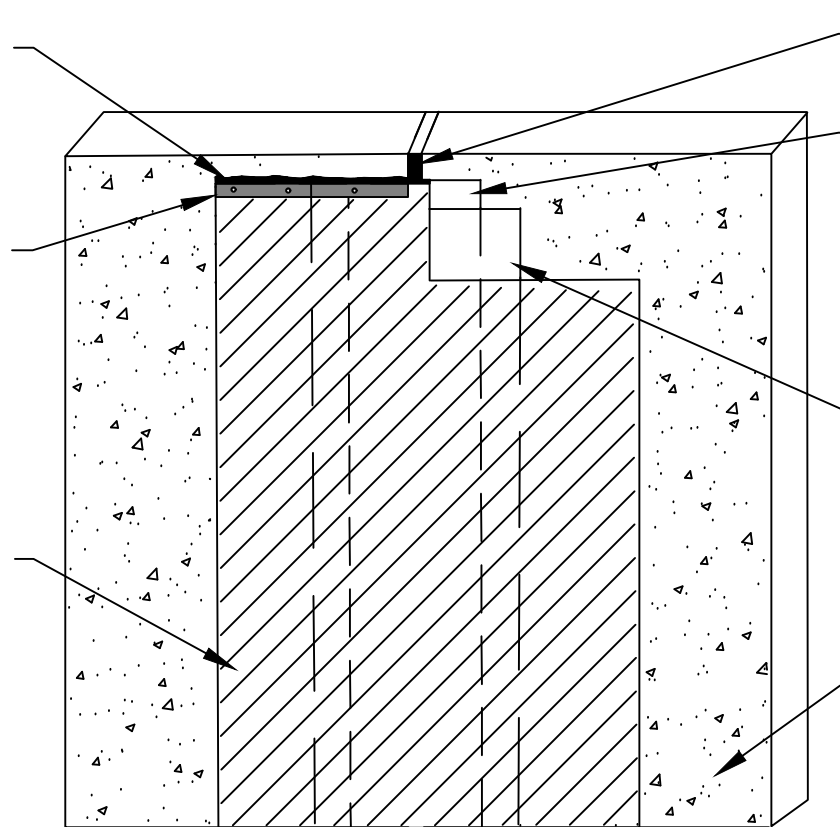


PRIMETAK DETAIL SEALANT OR LIQUID MEMBRANE APPLIED TO THE TOP EDGE OF TERMINATION BAR AND TO COVER MINIMUM 1/8" BEYOND PERIMETER OF FASTENER HEADS

1/8" X 1" METAL TERMINATION BAR FASTENED AT 8" SPACING AND 2" FROM EACH END BUT NOT ACROSS THE JOINT - BY OTHERS

FIELD SHEET OF PRIMETAK MEMBRANE APPLIED OVER THE 12" STRIP OF DETAIL MEMBRANE/TAPE - PREPARE SUBSTRATE WITH PRIMETAK LIQUID ADHESIVE, CALIFORNIA SEALANT OR ST LIQUID ADHESIVE AT A RATE OF 250 TO 300 SQ. FT. PER GALLON



BACKER ROD AND COMPATIBLE SEALANT (BY OTHERS)

8" STRIP OF DETAIL MEMBRANE/TAPE INVERTED OVER EXPANSION JOINT ADHESIVE SIDE FACING OUTWARD

12" STRIP OF DETAIL MEMBRANE/TAPE CENTERED OVER ADHESIVE SIDE OF 8" INVERTED PIECE AND ADHERED - PREPARE CONCRETE WITH PRIMETAK LIQUID ADHESIVE, CALIFORNIA SEALANT OR ST LIQUID ADHESIVE AT A RATE OF 250 TO 300 SQ. FT. PER GALLON

SUBSTRATE

**KINGFIELD**  
CONSTRUCTION PRODUCTS

20 N 4th St, Suite 300  
Minneapolis, MN 55401  
e: info@kingfieldcp.com  
o/f: 612.225.5167

SECTION @ WALL EXPANSION JOINT COVER

**SPECIAL NOTE: IF ADHESIVE IS REQUIRED FOR SEAMS OR ENDLAPS DO NOT USE ST LIQUID ADHESIVE**

DRAWING NO. : PRI.11

SCALE : NOT TO SCALE

EFFECTIVE DATE : .