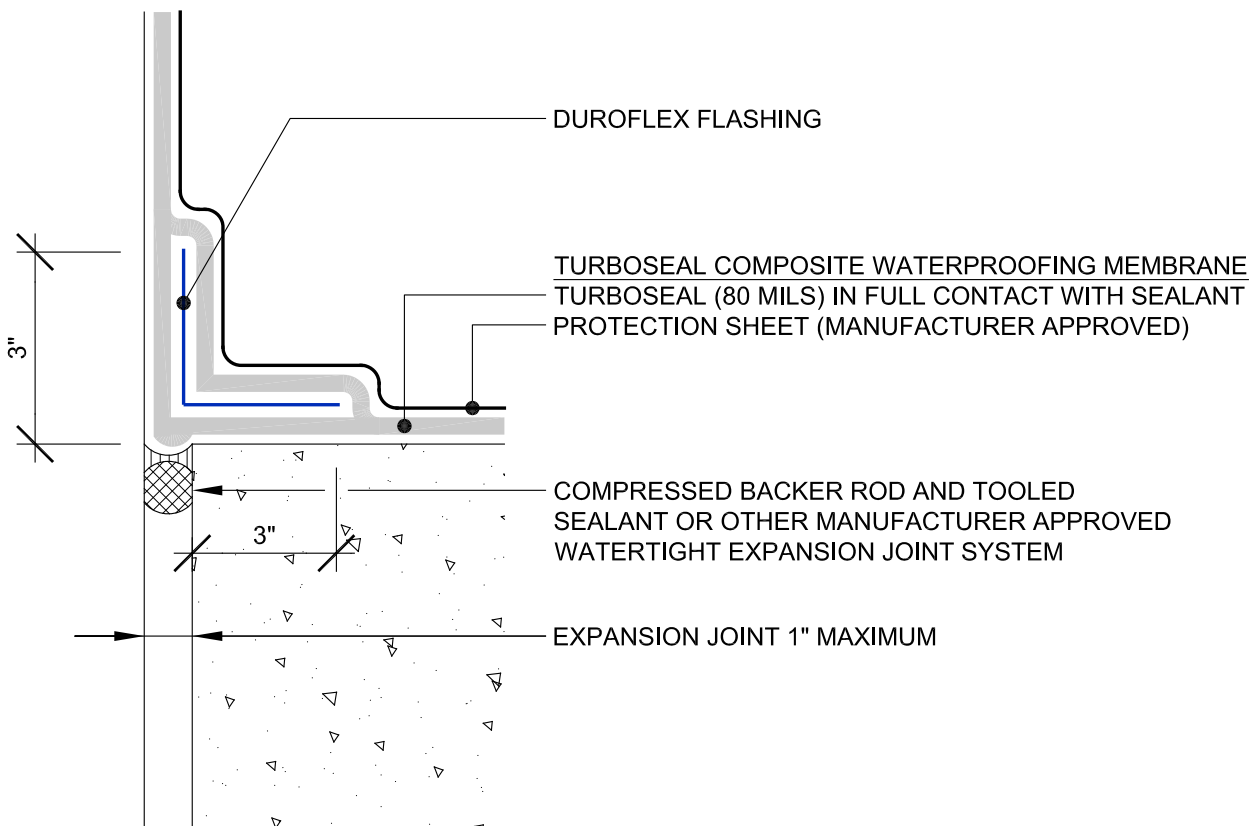


SEE DETAIL TUR-4.04 FOR GRADE TERMINATIONS.



NOTES:

1. DETAIL IS DESIGNED TO ACCOMMODATE 50% (MAX.) TOTAL MOVEMENT.
2. BACKER ROD WITH TOOLED SEALANT, OR OTHER MANUFACTURER APPROVED WATERTIGHT EXPANSION JOINT SYSTEM ARE REQUIRED TO BE INSTALLED PRIOR TO TURBOSEAL/DUROFLEX INSTALLATION.