

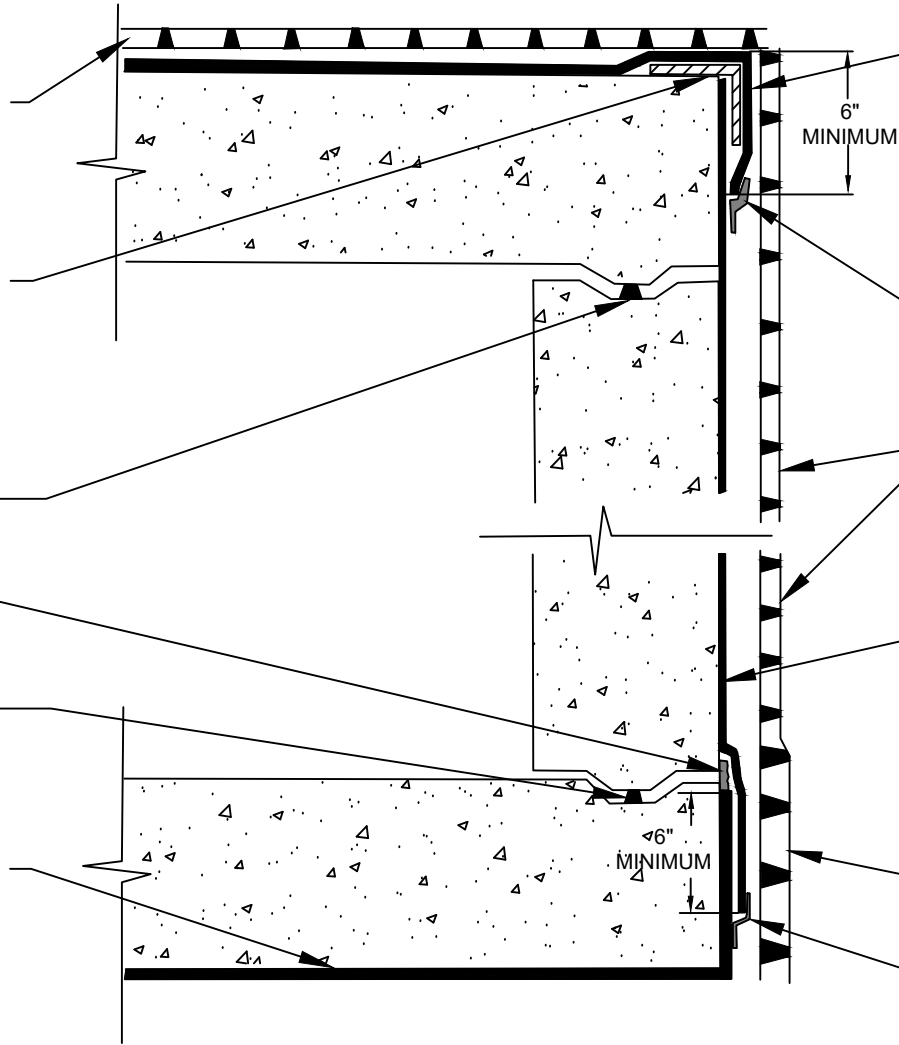
K-DRAIN COMPOSITE
DRAINBOARD - WOVEN MESH
FACING UP

12" STRIP OF PRIMETAK
DETAIL MEMBRANE/TAPE OR
PRIMETAK MEMBRANE
APPLIED TO OUTSIDE
CORNER PREPARED WITH
PRIMETAK LIQUID ADHESIVE,
CALIFORNIA SEALANT OR ST
LIQUID ADHESIVE AT A RATE
OF 250 - 350 SQ.FT PER
GALLON
BENTOTAK DS WATERSTOP

PRIMETAK DETAIL
SEALANT

BENTOTAK DS WATERSTOP

NOVATAK PRE-APPLIED
UNDERSLAB MEMBRANE
TOWARD CONCRETE POUR



PRIMETAK MEMBRANE APPLIED OVER
SUBSTRATE PREPARED WITH
PRIMETAK LIQUID ADHESIVE,
CALIFORNIA SEALANT OR ST LIQUID
ADHESIVE AT A RATE OF 250 TO 300
SQ. FT. PER GALLON AND
OVERLAPPING EXISTING MEMBRANE
MINIMUM 6"

PRIMETAK DETAIL SEALANT OR
LIQUID MEMBRANE APPLIED TO
TERMINAL EDGE OF MEMBRANE

K-DRAIN COMPOSITE DRAINBOARD -
FABRIC FACING THE BACKFILL

PRIMETAK MEMBRANE APPLIED OVER
SUBSTRATE PREPARED WITH
PRIMETAK LIQUID ADHESIVE,
CALIFORNIA SEALANT OR ST LIQUID
ADHESIVE AT A RATE OF 250 TO 300
SQ. FT. PER GALLON AND ONTO
NOVATAK UNDERSLAB MEMBRANE A
MINIMUM OF 6"

K-DRAIN COMPOSITE DRAINBOARD

PRIMETAK DETAIL SEALANT OR
LIQUID MEMBRANE APPLIED TO
TERMINAL EDGE OF MEMBRANE

KINGFIELD
CONSTRUCTION PRODUCTS

20 N 4th St, Suite 300
Minneapolis, MN 55401
e: info@kingfieldcp.com
o/f: 612.225.5167

SECTION@ TUNNEL WATERPROOFING DETAIL

**SPECIAL NOTE: IF ADHESIVE IS REQUIRED FOR SEAMS
OR ENDLAPS DO NOT USE ST LIQUID ADHESIVE**

DRAWING NO. : PRI.05

SCALE : NOT TO SCALE

EFFECTIVE DATE : .