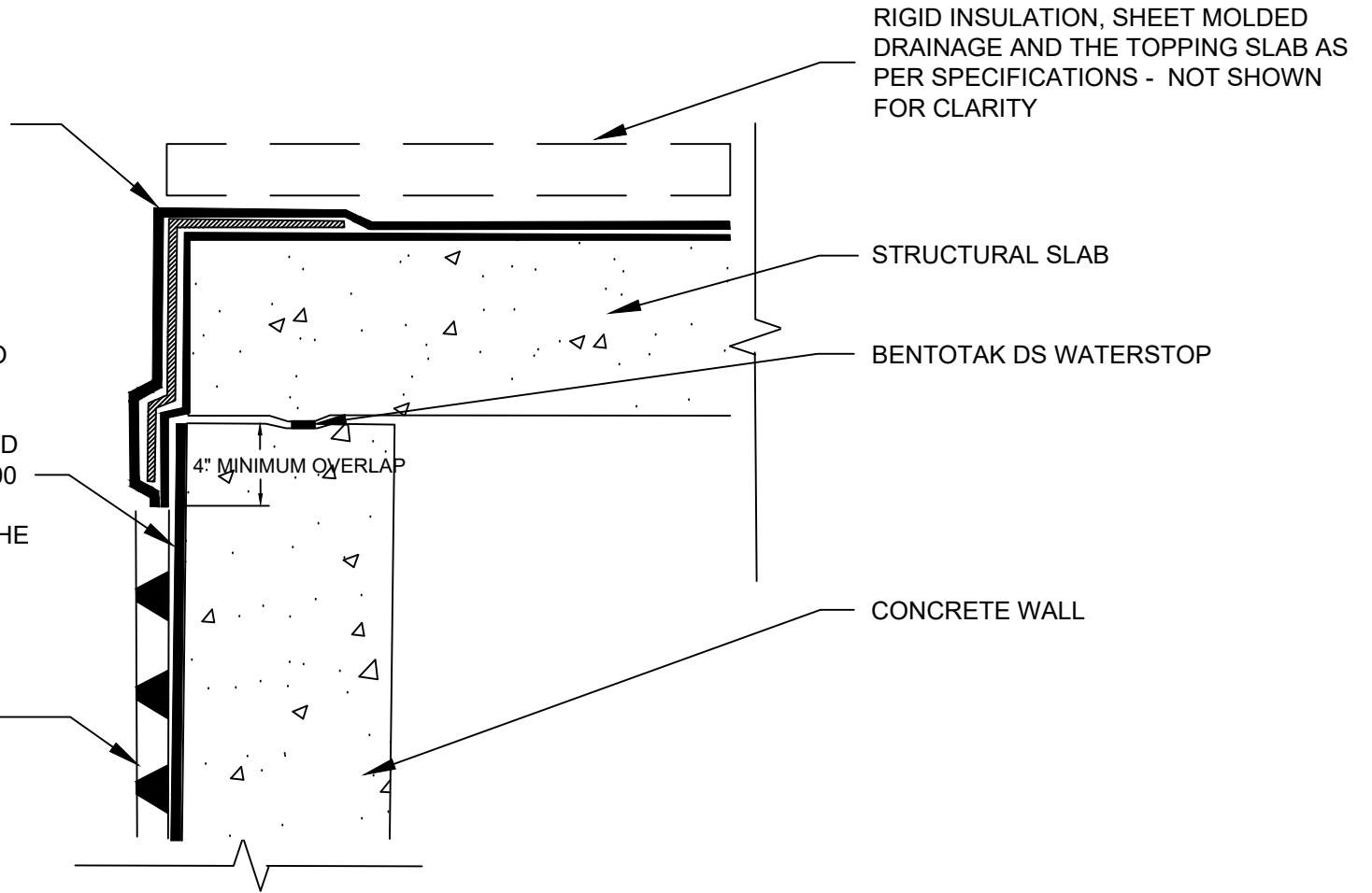


HYDROGEL POLYMER RUBBER GEL WATERPROOFING SYSTEM APPLIED ON THE VERTICAL LEG AND COVERED WITH GFG SERIES HDPE CAPSHEET

PRIMETAK MEMBRANE APPLIED TO SUBSTRATE PREPARED WITH PRIMETAK LIQUID ADHESIVE, CALIFORNIA SEALANT OR ST LIQUID ADHESIVE AT A RATE OF 250 TO 300 SQ. FT. PER GALLON - REMOVE 4" OF PRIMETAK HDPE TO ADHERE THE HYDROGEL TO THE EXPOSED ASPHALT COMPOUND

K-DRAIN COMPOSITE DRAINBOARD - FABRIC FACING BACKFILL



RIGID INSULATION, SHEET MOLDED DRAINAGE AND THE TOPPING SLAB AS PER SPECIFICATIONS - NOT SHOWN FOR CLARITY

STRUCTURAL SLAB

BENTOTAK DS WATERSTOP

CONCRETE WALL

4" MINIMUM OVERLAP

KINGFIELD
CONSTRUCTION PRODUCTS

20 N 4th St, Suite 300
Minneapolis, MN 55401
e: info@kingfieldcp.com
o/f: 612.225.5167

SECTION @ HYDROGEL POLYMER RUBBER GEL TIE IN TO SELF ADHERED MEMBRANE

SPECIAL NOTE: IF ADHESIVE IS REQUIRED FOR SEAMS OR ENDLAPS DO NOT USE ST LIQUID ADHESIVE

DRAWING NO. : PRI.12

SCALE : NOT TO SCALE

EFFECTIVE DATE : .